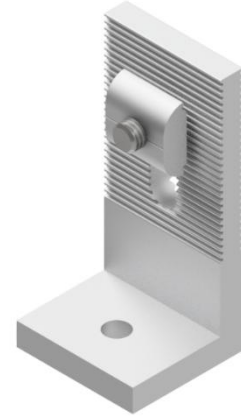


ROOFTOP LM-L-M8 & LM-L-M10



LM-L-M8 & LM-L-M10

L-Brackets offer a strong, versatile solution for securing mounting rails to various surfaces. Engineered for durability and ease of installation, these brackets are ideal for solar structures requiring a reliable connection to the substructure.

Application	L-brackets provide a rigid 90° connection between the mounting surface and rail, allowing secure attachment to Brackets, concrete, or metal substructures.
Key Features	<ul style="list-style-type: none"> • Corrugated vertical wall for improved grip and alignment with mounting rails. • Supplied with pre-installed rail nut assembly for faster installation. • Base hole available in M8 or M10 to suit various fastening requirements. • Slotted design allows for fine adjustment during alignment and positioning.
Material	Aluminium 6005-T5, Stainless Stel SUS304
Product Type	Substructure Fix
Specifications	Anodised > 13 µm
Dimensions	H 84 mm x L 38 mm x W 39.5 mm
Total Weight	104.5 g (including fasteners)
Orientations	Suitable to all orientations.

